

# e-Sword 9 Converter: User Guide

## Table of Contents

Preface .....	1
Typographical Conventions Used in This Guide .....	1
System Requirements.....	1
Features .....	1
Installation .....	2
Preparation for Normal Mode Conversion .....	3
Normal Mode Module Conversion .....	3
Preparation for Batch Mode Conversion .....	7
Batch Mode Module Conversion.....	7
You Too Can Help.....	11
Troubleshooting.....	11
Index.....	12

## Preface

e-Sword 9 Converter is a tool for converting e-Sword 8.0.6 specification adherent modules to e-Sword 9.x modules and is coded by Clint Branham, Jr. -- [esword9@goodolclint.com](mailto:esword9@goodolclint.com). Brother Clint's purpose in writing this utility was at first for his own private use, but soon grew into an effort to assist the entire e-Sword community in making it through the e-Sword v9 update with as little pain as possible.

On 30 April 2009 Brother Rick Meyers author of e-Sword, released e-Sword v9. This new version of e-Sword requires that all Bibles, Commentaries, Dictionaries, Topic Notes, etc., change from using the MS Access Jet DB to using the SQLite RDBMS. By some estimates, many thousands of e-Sword 8.x modules exist, and although e-Sword v9 upon its initial installation converts most 8.x modules to 9.x modules, for various reasons, many 8.x modules are left unconverted; thus the need for e-Sword 9 Converter.

## Typographical Conventions Used in This Guide

*Italic*: Used for URLs, email addresses, filenames, file extensions, paths, and directories.  
**Constant width**: Indicates commands, buttons or configuration options.  
**Constant width bold**: Shows text that should be typed literally by the user.  
*Constant width italic*: Indicates message from the system.

## System Requirements

- ✓ **Operating Systems:** Windows Server 2003; Windows Server 2008; Windows XP; Windows Vista
- ✓ **Processor:** 400 MHz Pentium or equivalent (Minimum); 1GHz Pentium or equivalent (Recommended)
- ✓ **RAM:** 96 MB (Minimum); 256 MB (Recommended)
- ✓ **Hard Disk:** Up to 500 MB of available space may be required
- ✓ **Other:** [Microsoft .NET Framework 3.5](#)

## Features

- ✓ Converts all of the allowed types of e-Sword 8.0.6 specification adherent modules.
- ✓ Multilingual interface with language auto detection. Currently in English, Spanish and Polish.
- ✓ Low system overhead resulting in fast, simple and clean module conversion.
- ✓ No detailed e-Sword module preparation required for use.
- ✓ Normal Mode Module Conversion: In 7 easy steps you can convert that 8.x module you just can't live without.
- ✓ Batch Mode Module Conversion: Quickly converts all of your 8.x modules, including those in subdirectories.
- ✓ Password Function: Assists you in converting any 8.x password protected modules you originally created.
- ✓ Fully complaint with the Microsoft .NET Framework 3.5 specifications.

Currently e-Sword 9 Converter will convert the following types of e-Sword 8.0.6 specification adherent modules:

Unconverted e-Sword 8.x modules	Converted e-Sword 9.x modules
• Bible (. <i>bbf</i> )	• Bible (. <i>bbfx</i> )
• Bible Reading Plan (. <i>brp</i> )	• Bible Reading Plan (. <i>brpx</i> )
• Commentary (. <i>cmf</i> )	• Commentary (. <i>cmtx</i> )
• Devotional (. <i>dev</i> )	• Devotional (. <i>devx</i> )
• Dictionary (. <i>dct</i> )	• Dictionary (. <i>dctx</i> )
• Graphics & Maps (. <i>map</i> )	• Graphics & Maps (. <i>mapx</i> )
• Harmony (. <i>har</i> )	• Harmony (. <i>harx</i> )
• Memory Verses (. <i>mem</i> )	• Memory Verses (. <i>memx</i> )
• Overlay (. <i>ovf</i> )	• Overlay (. <i>ovfx</i> )
• Prayer Request (. <i>prf</i> )	• Prayer Request (. <i>prfx</i> )
• Study Note (. <i>not</i> )	• Study Note (. <i>notx</i> )
• Topic Note (. <i>top</i> )	• Topic Note (. <i>topx</i> )
• Verse List (. <i>lst</i> )	• Verse List (. <i>lstx</i> )

e-Sword 9 Converter **WILL NOT NOW OR EVER** convert the module type: Illustrations (.*ill*).



Although, e-Sword 9 Converter is a very powerful tool, it must **NEVER** be used to convert the following types of e-Sword 8.x modules. Furthermore, please keep in mind that the conversion of any of the module types listed below is in direct violation of US law, International law and God's Law:

- Never convert any e-Sword 8.x password protected public domain module that you did not originally create or any e-Sword 8.x password protected module that you don't personally have the explicit permission of the original module creator to convert.
- Never convert any e-Sword 8.x module that contains copyrighted material.
- Never convert any e-Sword 8.x Premium module, whether you bought your Premium module from [e-Sword.net](http://e-Sword.net), [eStudySource.com](http://eStudySource.com) or another source. To obtain your new e-Sword 9.x Premium module, please return to the website where you originally purchased your e-Sword 8.x Premium module, and then follow their instructions to receive your new e-Sword 9.x Premium module.

Furthermore, because of any illegal acts that may be involved in the conversion of the above module types. Brother Clint will never condone nor support the conversion of any of the above listed module types, or any individual or group that may use e-Sword 9 Converter to do so.

## Installation

**Step 1:** Obtain e-Sword 9 Converter by downloading it from one of the following links:

<http://goodolclint.com/e-sword>  
<http://e-sword-users.org/users/node/2728>

When asked, you may either Run or Save *setup.exe* on your PC and then execute it from where you saved it.

**Step 2:** After you've executed *setup.exe* installation will begin. The installer is normal and just like many you've seen before. The only item of particular note is the location where e-Sword9 Converter is installed. This is because this is

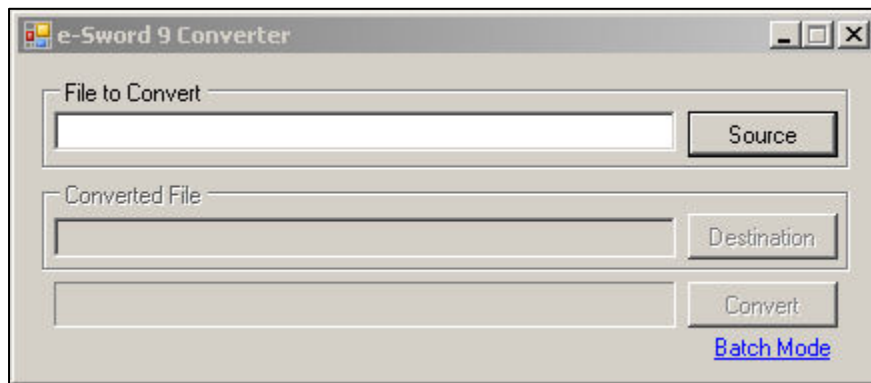
the location where the log file *eSword9Converter.log* will be written and is used to troubleshoot if e-Sword 9 Converter were to encounter any problems during conversion. If you accepted the default location the log file *eSword9Converter.log* will be found at *C:\Program Files\ESword9Converter* if you ever need it.

### Preparation for Normal Mode Conversion

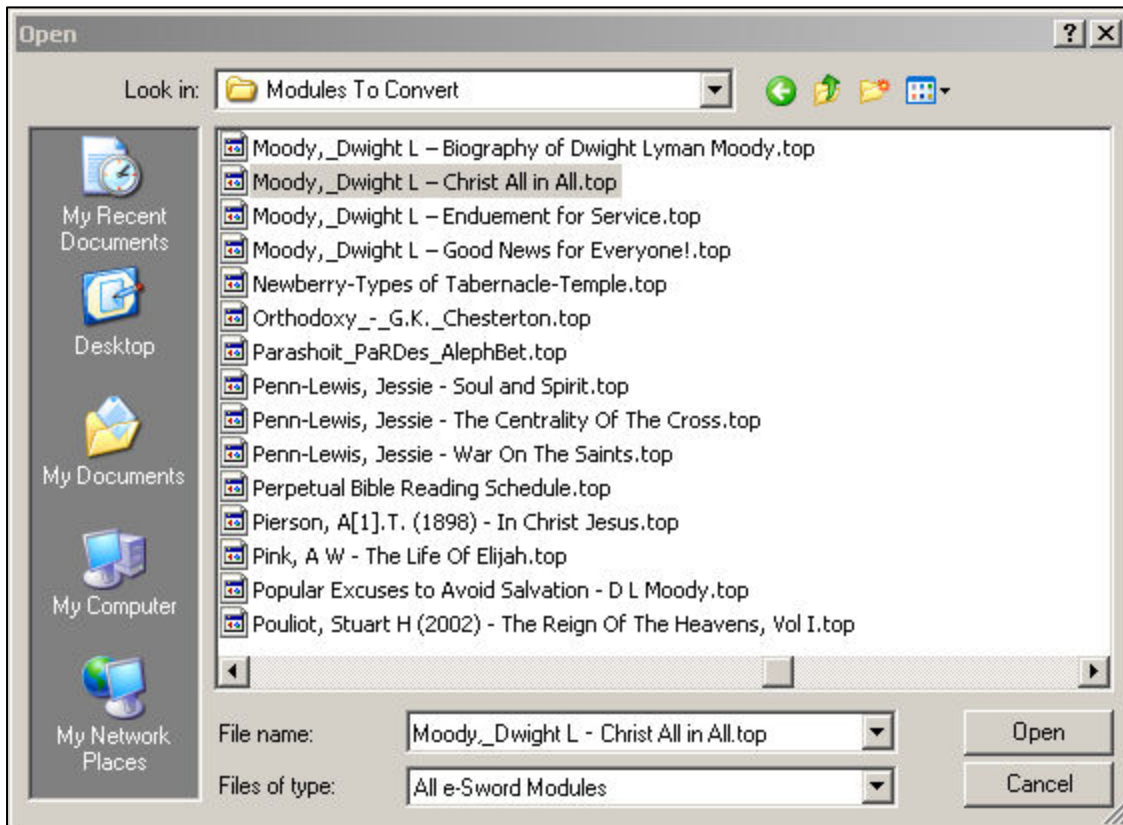
For Normal Mode conversion there's no preparation required when using e-Sword 9 Converter to convert e-Sword 8.x modules to e-Sword 9.x modules. However, just to be on the safe side, we highly recommend that you backup your e-Sword 8.x modules before you begin the conversion process.

### Normal Mode Module Conversion

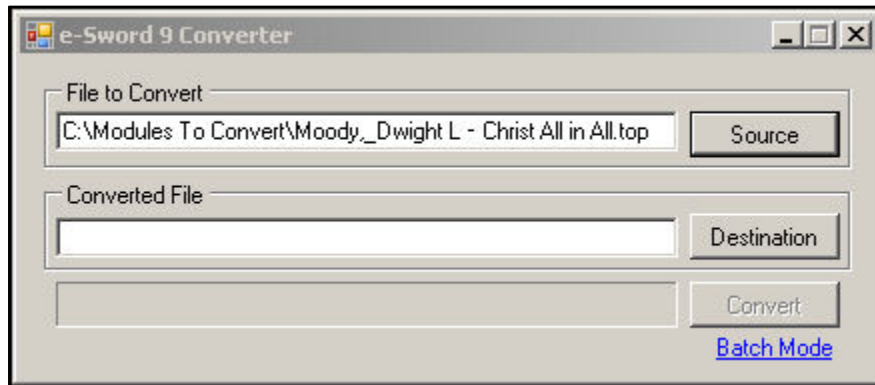
**Step 1:** Launch e-Sword 9 Converter and click the *Source* button



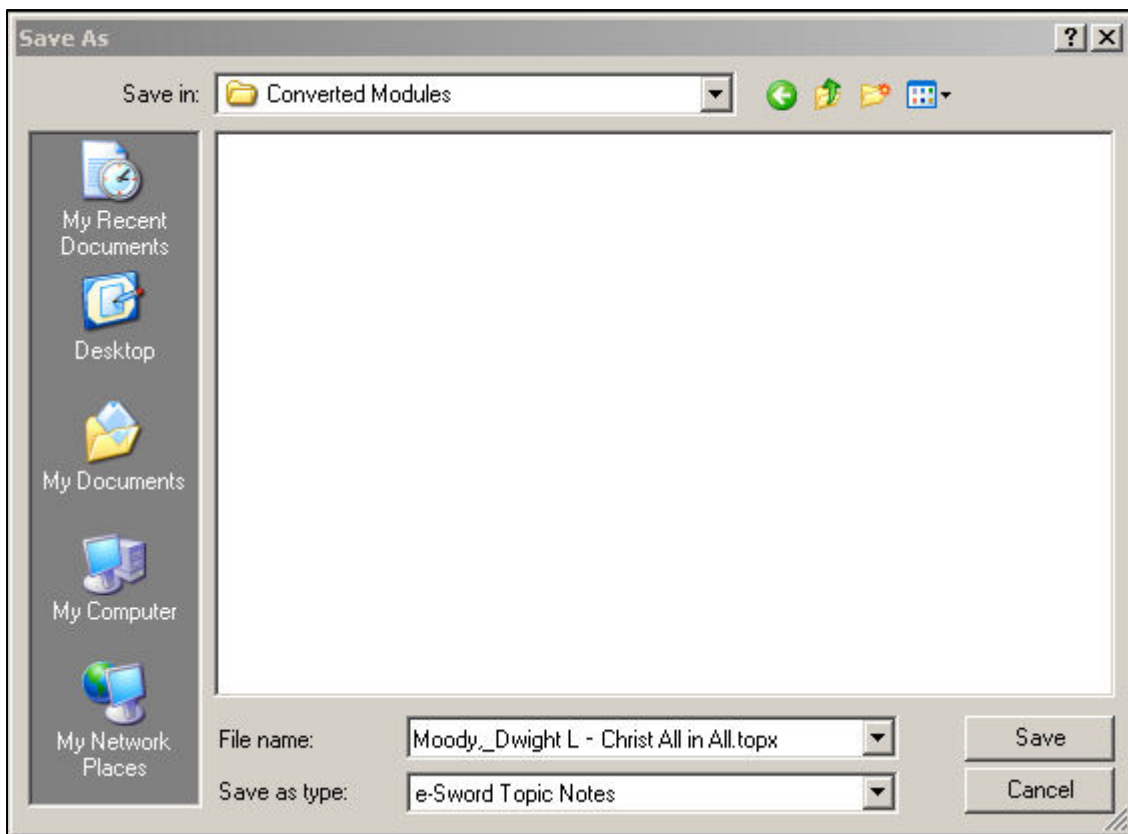
**Step 2:** Select the module you want to convert from the folder, and then click the *Open* button. Please keep in mind the folder you select will probably not be named *Modules To Convert*, unless you specifically named it that.



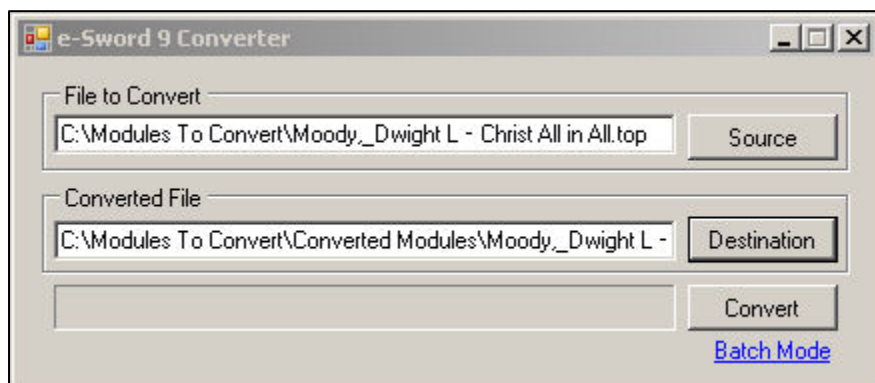
**Step 3:** The Destination button is now active, click it.



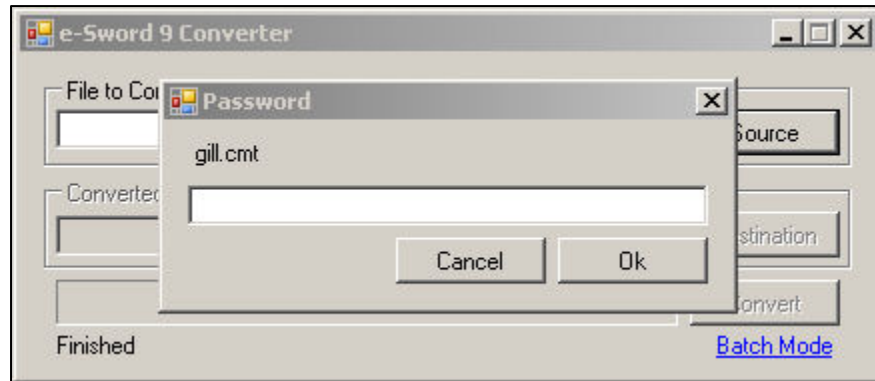
**Step 4:** Select the folder to write the converted module to and then click the Save button. Please keep in mind the folder you select will probably not be named *Converted Modules*, unless you specifically named it that.



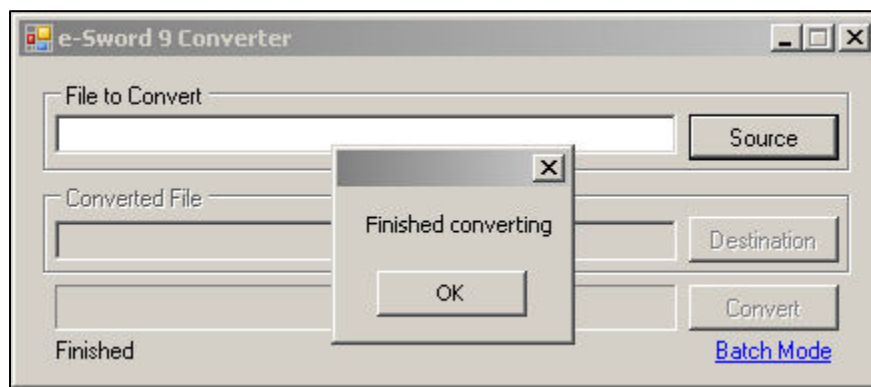
**Step 5:** The Convert button is now active, click it.



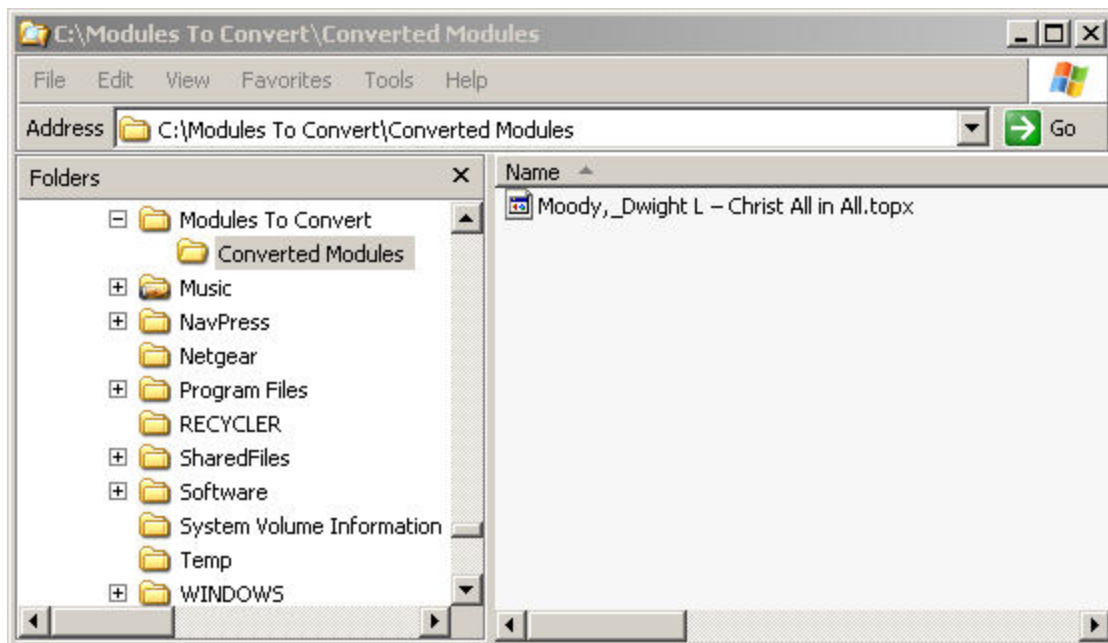
**Step 5a:** If after you click the *Convert* button the *Password* window appears, and you are the original module creator or you have the explicit permission of the original module creator, enter the module's **password** now. Otherwise, click the *Cancel* button and choose another module to convert! Please keep in mind that the unauthorized conversion of any e-Sword 8.x module is in direct violation of US law, International law and God's Law.



**Step 6:** When the *Finished converting* popup appears, click the *OK* button to complete the process.



**Step 7:** Using Windows Explorer to view your module, this is what it will look like after conversion.



**Step 8:** If you haven't already done so, move the converted module into the appropriate e-Sword directory.

**Modules to move to your *C:\Program Files\e-Sword* directory.**

- *.bbx* (Bibles)
- *.cmtx* (Commentaries)
- *.dctx* (Dictionaries)
- *.devx* (Devotionals)
- *.harx* (Harmonies, Gospel or Others)
- *.mapx* (Maps (Graphics))
- *.topx* (Topic Notes you didn't create or you aren't editing and won't edit)

**Modules to move to your *C:\Documents and Settings\[username]\My Documents\e-Sword* directory.**

- *.brpx* (Bible Reading Plans)
- *.lstx* (Bookmarks/Verse Lists)
- *.memx* (Memory Verses)
- *.notx* (Study Notes)
- *.ovlx* (Bible Markup Overlays)
- *.prlx* (Prayer Requests)
- *.topx* (Topic Notes you created or someone else created and you're editing)



Not all e-Sword 8.x modules will convert successfully. There are many reasons for this. The main reason we have found is that the module is not e-Sword 8.0.6 specification adherent. What this means is that there is something wrong in the MS Access database that comprises the module. Quite often it's a problem with the data itself (missing a verse or an incomplete chapter) or the RTF code that formats the text within the module is defective. It has been our experience while using the e-Sword 9 Converter that more than 97% of all e-Sword 8.x modules will and do convert just fine.

### Preparation for Batch Mode Conversion

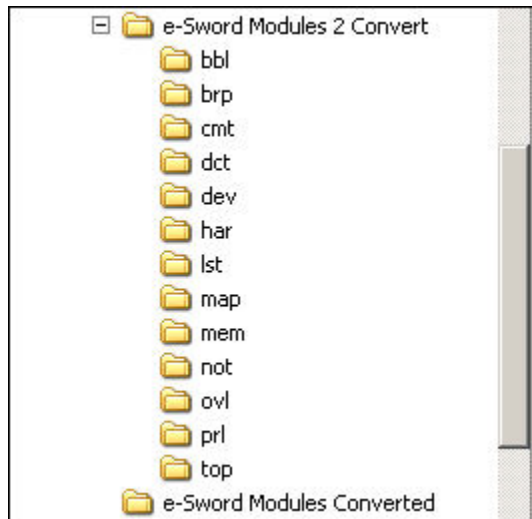
To prepare for Batch Mode conversion, especially if you have a large number of e-Sword 8.x modules to convert, we recommend that you make the following optional preparations:

- Create a directory structure something like the one pictured below.
- Copy all of the e-Sword 8.x modules you wish to convert into the appropriate directories.
- **DO NOT** during this process include any modules from e-Sword.net, eSturdySource.com or any other Premium or password protected modules you did not originally create, or you do not have the explicit permission of the original module creator to convert.

Organizing the e-Sword 8.x modules you wish to convert in this fashion, will make using e-Sword 9 Converter a more rewarding and satisfying experience.

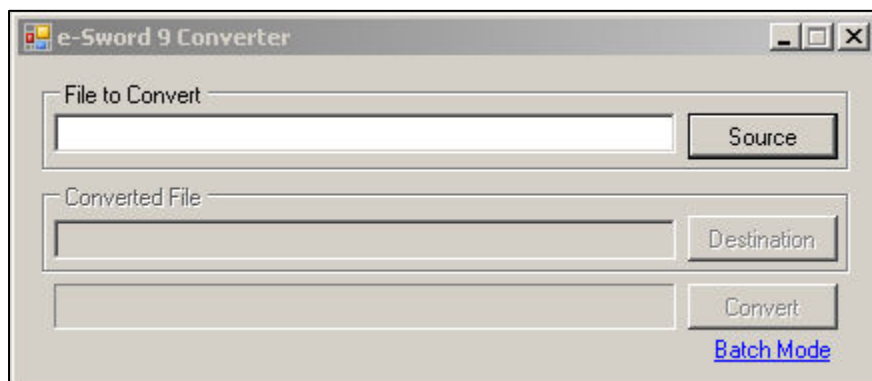
Remember the above steps are optional and just like Normal Mode conversion, Batch Mode conversion requires no actual preparation. And finally, just to be on the safe side, we highly recommend that you backup your e-Sword 8.x modules before you begin the conversion process.

Sample Optional Directory Structure for Batch Mode Conversion

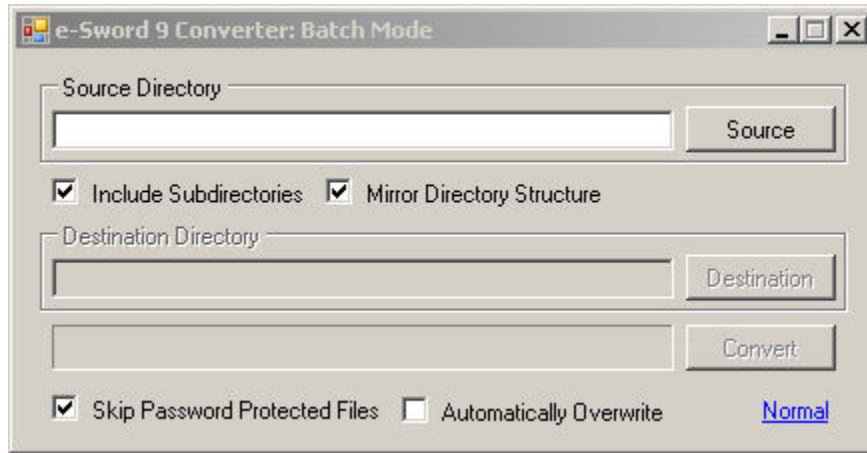


### Batch Mode Module Conversion

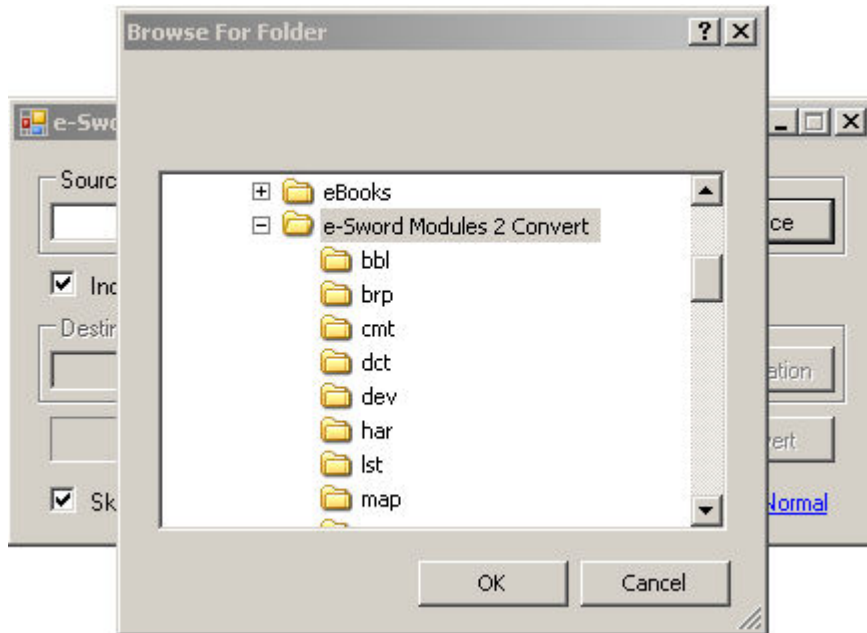
**Step 1:** Launch e-Sword 9 Converter and click the Batch Mode link.



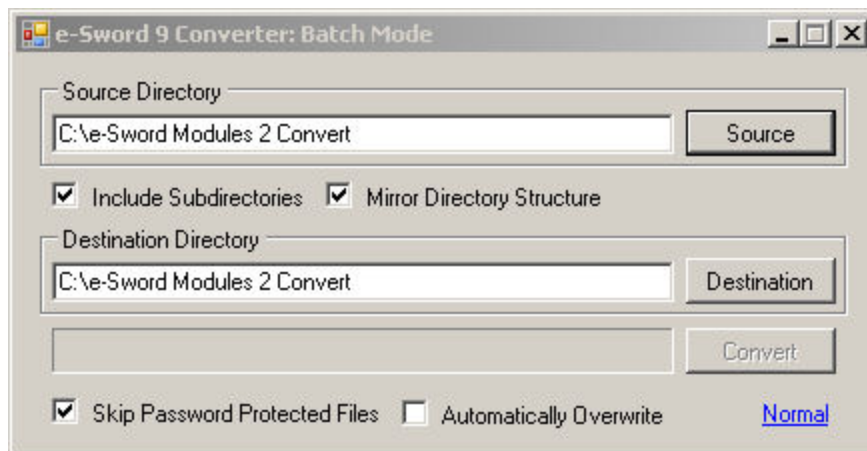
**Step 2:** Check the Include Subdirectories, Mirror Directory Structure and the Skip Password Protected Files checkboxes. Then click the Source button.



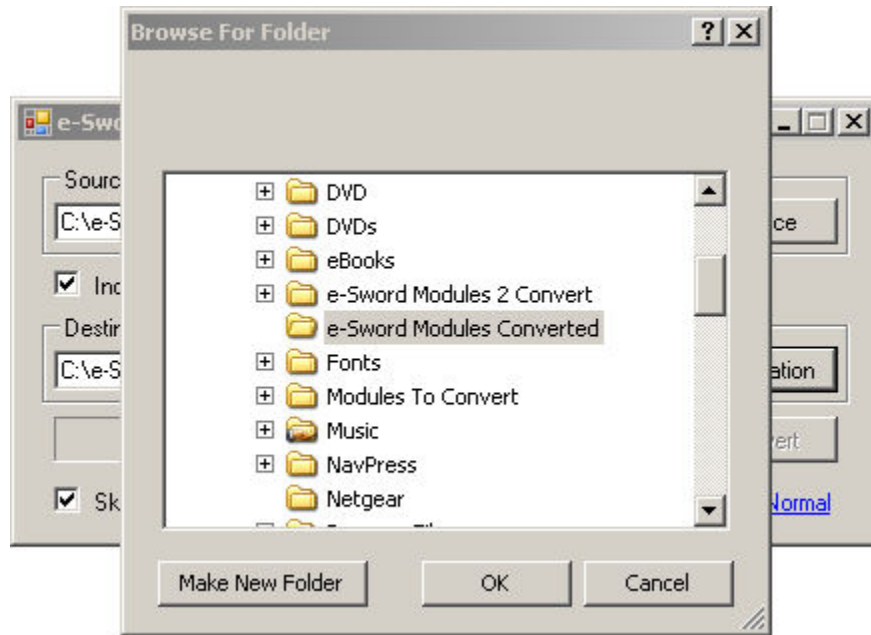
**Step 3.** Select the folder to convert and then click the OK button. Please keep in mind the folder you select will probably not be named *e-Sword Modules 2 Convert*, unless you specifically named it that.



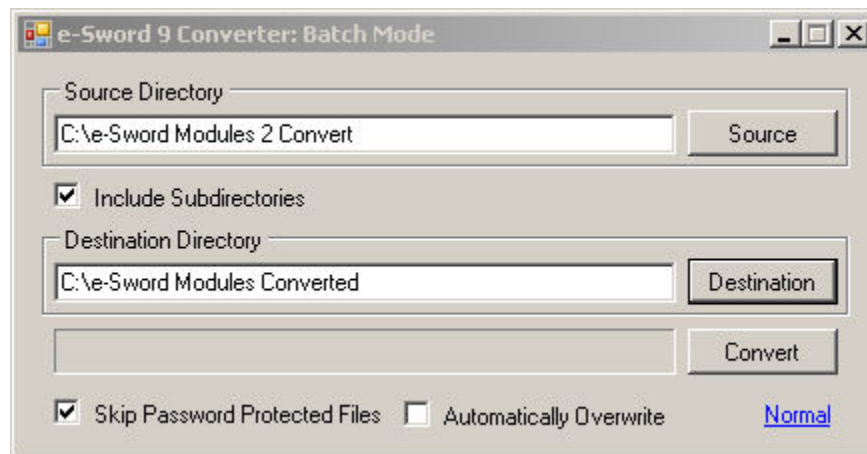
**Step 4:** The Destination button is now active, click it.



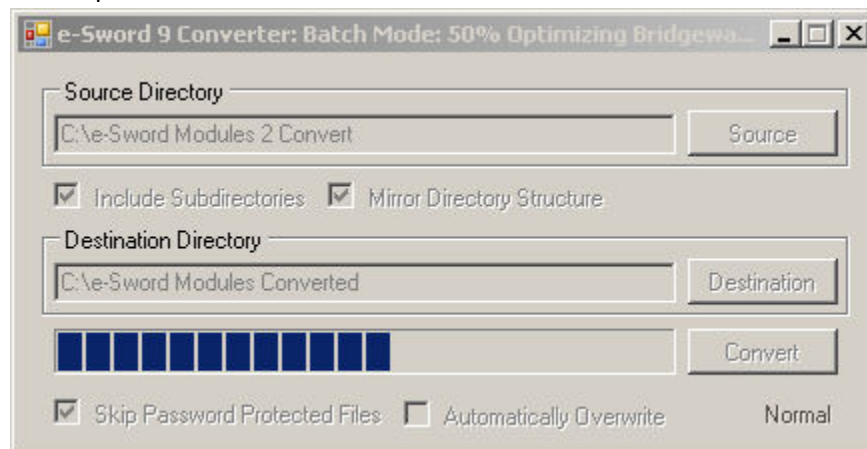
**Step 5:** Select the folder to write the converted modules to and then click the OK button. Please keep in mind the folder you select will probably not be named *e-Sword Modules Converted*, unless you specifically named it that.



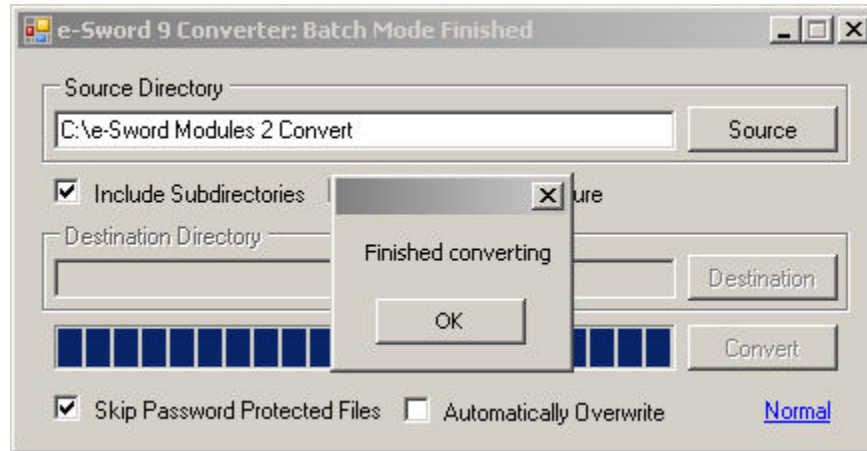
**Step 6:** The Convert button is now active, click it.



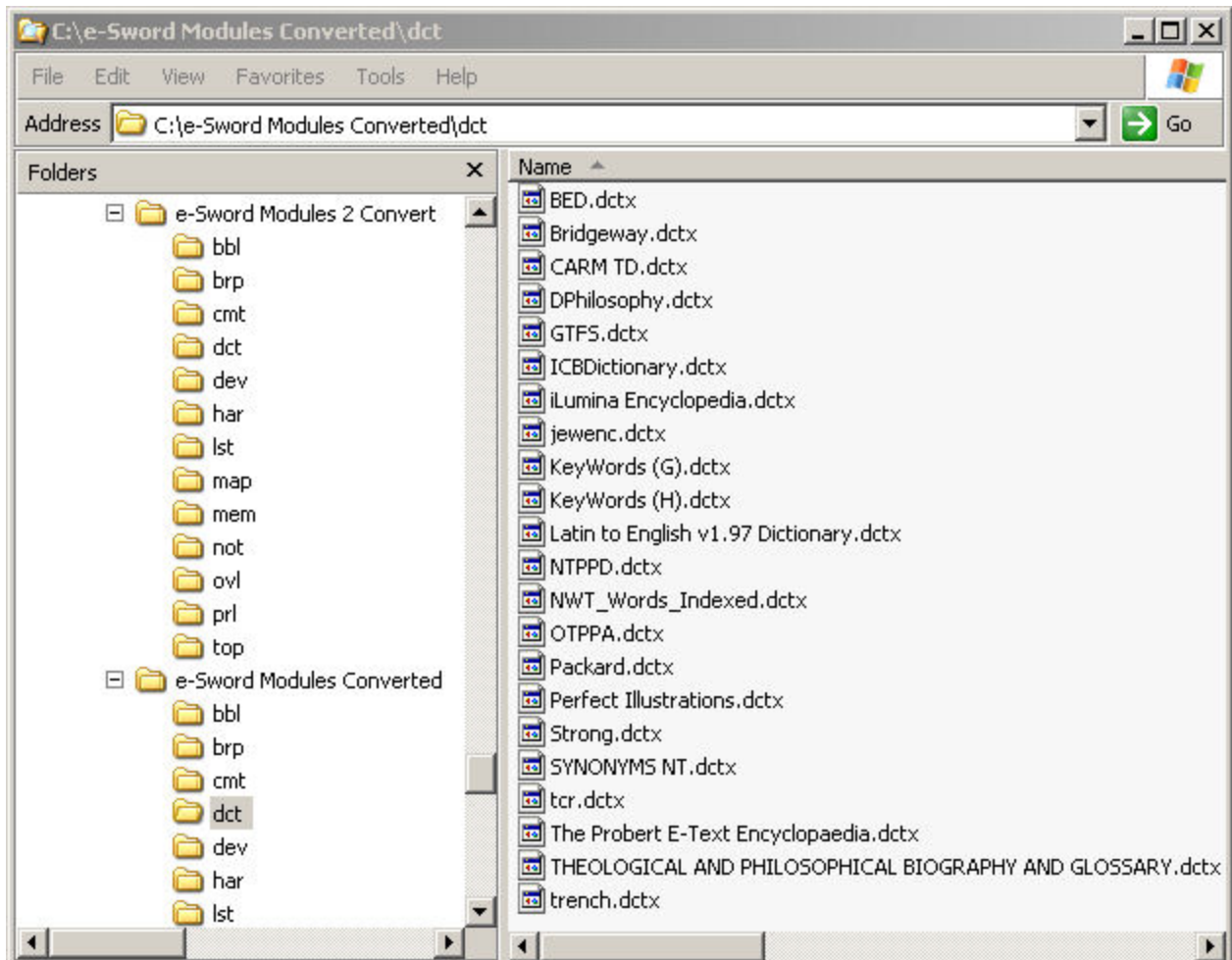
**Step 7:** Batch conversion in process.



**Step 8:** When the *Finished converting* popup appears, click the OK button to complete the process.



**Step 9:** Using Windows Explorer to view your modules, this is what they will look like after conversion. Notice how e-Sword 9 Converter duplicated the directory structure of the original source directory (*C:\e-Sword Modules 2 Convert*) and placed the converted modules in the correct directories. This is because we checked the *Mirror Directory Structure* checkbox back in Step 2. This feature makes keeping your converted modules organized an easy task.



**Step 10:** If you haven't already done so, move the converted modules into the appropriate e-Sword directories.

**Modules to move to your *C:\Program Files\e-Sword* directory.**

- *.bblx* (Bibles)
- *.cmtx* (Commentaries)
- *.dctx* (Dictionaries)
- *.devx* (Devotionals)
- *.harx* (Harmonies, Gospel or Others)
- *.mapx* (Maps (Graphics))
- *.topx* (Topic Notes you didn't create or you aren't editing and won't edit)

**Modules to move to your *C:\Documents and Settings\[username]\My Documents\e-Sword* directory.**

- *.brpx* (Bible Reading Plans)
- *.lstx* (Bookmarks/Verse Lists)
- *.memx* (Memory Verses)
- *.notx* (Study Notes)
- *.ovlx* (Bible Markup Overlays)
- *.prlx* (Prayer Requests)
- *.topx* (Topic Notes you created or someone else created and you're editing)

## You Too Can Help

Just as Brother Clint wrote e-Sword 9 Converter to help the e-Sword community, you too can help. If you are fluent in another language besides English, Spanish or Polish, you can help out by translating the e-Sword 9 Converter interface or this User Guide into your language. Or maybe you're a programmer and think you might like to help further the development of the e-Sword 9 Converter. Whatever your case is if you want to help out, email Brother Clint at [esword9@goodolclint.com](mailto:esword9@goodolclint.com) and let him know that you're willing to lend a hand for the sake of His Kingdom and the e-Sword community.

## Troubleshooting

If you have problems running e-Sword 9 Converter, please check and be sure that you have the [Microsoft .NET Framework 3.5](#) installed on your computer. You can also stop by e-Sword Users and post your question in their [Converting e-Sword 8.x User Made Modules To 9.x](http://e-sword-users.org/users/forum/2345) forum at <http://e-sword-users.org/users/forum/2345>.

If your problems are regarding the conversion of a specific module and the problem is **NOT PASSWORD RELATED**, please send the report "*eSword9Converter.log*" produced by e-Sword 9 Converter to Brother Clint at [esword9@goodolclint.com](mailto:esword9@goodolclint.com). If you accepted the default install location during the installation of e-Sword 9 Converter, the log file *eSword9Converter.log* will be found at *C:\Program Files\eSword9Converter*. Also be sure and include the problem module in a compressed format (.zip, .rar) and email both the module and the report to Brother Clint.

## Index

- .bbl, 2
- .bblx, 2, 6, 11
- .brp, 2
- .brpx, 2, 6, 11
- .cmt, 2
- .cmtx, 2, 6, 11
- .dct, 2
- .dctx, 2, 6, 11
- .dev, 2
- .devx, 2, 6, 11
- .har, 2
- .harx, 2, 6, 11
- .ill, 2
- .lst, 2
- .lstx, 2, 6, 11
- .map, 2
- .mapx, 2, 6, 11
- .mem, 2
- .memx, 2, 6, 11
- .not, 2
- .notx, 2, 6, 11
- .ovl, 2
- .ovlx, 2, 6, 11
- .prl, 2
- .prlx, 2, 6, 11
- .top, 2
- .topx, 2, 6, 11
- 8.x, 1, 2, 5
- 9.x, 1, 11
- Access, 1
- active, 4, 8, 9
- backup, 3, 7
- Batch, 1, 7, 9
- Batch Mode, 1, 7
- Batch Mode conversion, 7
- Batch Mode Module Conversion, 1, 7
- Bible, 2, 6, 11
- Bible Reading Plan, 2
- Bibles, 1, 6, 11
- Bookmarks/Verse Lists, 6, 11
- click it, 4, 8, 9
- Commentaries, 1, 6, 11
- Commentary, 2
- conversion, 3, 5, 7, 9, 11
- Convert, 3, 4, 5, 8, 9
- converted, 4, 6, 9, 11
- converting, 1, 5, 10
- converts, 1
- Converts, 1
- Destination, 4, 8
- Devotional, 2
- Devotionals, 6, 11
- Dictionaries, 1, 6, 11
- Dictionary, 2
- directory, 6, 11
- edit, 6, 11
- editing, 6, 11
- email, 11
- e-Sword, 1, 2, 3, 5, 6, 7, 8, 9, 10, 11
- e-Sword 8.0.6, 1, 2
- e-Sword 8.x, 1, 3, 7, 11
- e-Sword 9 Converter, 1, 2, 3, 7, 11
- e-Sword 9.x, 1, 2, 3, 7
- e-Sword community, 1, 11
- e-Sword modules, 3, 7
- e-Sword Users, 11
- e-Sword v9, 1
- eSword9Converter.log*, 3, 11
- execute, 2
- Features, 1
- Finished*, 5, 10
- folder, 3, 4, 8, 9
- God's Law, 5
- Gospel, 6, 11
- Graphics, 2, 6, 11
- Graphics & Maps, 2
- Harmonies, 6, 11
- Harmony, 2
- Illustrations, 2
- Include Subdirectories, 8
- installation, 1, 2, 11
- installer, 2
- International law, 5
- language auto detection, 1
- Launch, 3, 7
- location, 2
- Maps, 6, 11
- Markup Overlays, 6, 11
- Memory Verses, 2, 6, 11
- Microsoft .NET Framework 3.5, 1, 11
- Mirror Directory Structure, 10
- module, 1, 2, 3, 4, 5, 6, 11
- module conversion, 1
- modules, 1, 2, 3, 7, 9, 11
- move, 6, 11
- Multilingual, 1
- Normal Mode Module Conversion, 1, 3
- OK, 5, 8, 9, 10
- Open, 3
- original module creator, 5
- Overlay, 2
- Password, 1, 5, 8
- password protected, 1
- permission, 5
- popup, 5, 10
- Prayer Request, 2
- preparation, 3, 7
- Preparation for Conversion, 3, 7
- Protected Files, 8
- RDBMS, 1
- report, 11
- Run, 2
- Save, 2, 4
- saved, 2
- Select, 3, 4, 8, 9
- setup.exe*, 2
- Source, 3, 8
- specification adherent, 1, 2
- SQLite, 1
- Study Note, 2
- subdirectories, 1
- System Requirements, 1
- tool, 1
- Topic Note, 2
- Topic Notes, 1, 6, 11
- troubleshoot, 3
- Troubleshooting, 11
- Typographical Conventions, 1
- unauthorized, 5
- unconverted, 1
- US law, 5
- User Made, 11
- Verse List, 2
- violation, 5
- Windows Explorer, 5, 10
- Windows Server 2003, 1
- Windows Server 2008, 1
- Windows Vista, 1
- Windows XP, 1
- You Too Can Help, 11